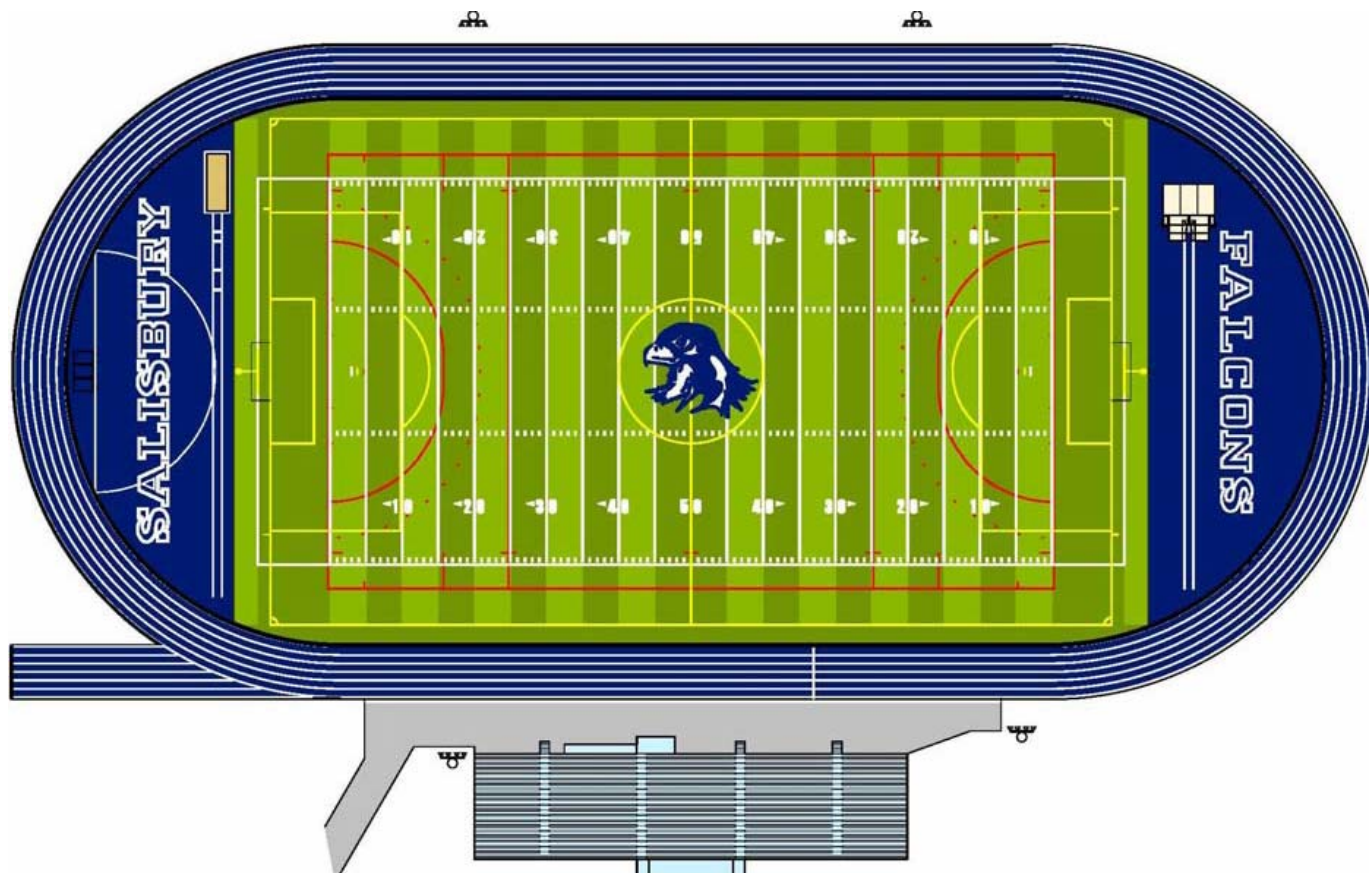


Salisbury High School Turf 2008



Salisbury Community Synthetic Turf 2008 Committee

A 501c3 not-for-profit organization

P.O. Box 803 • Emmaus, PA 18049

email: turf@std.org

THE PROJECT



- **New Synthetic Turf Multi-Purpose Sports Field**
- **The Venue: Salisbury High School Stadium**
- **Capacity: 2250**
- **Location: Salisbury High School**
500 East Montgomery Street
Allentown, Pennsylvania 18103
- **Estimated Cost: \$1,000,000**
- **Construction Date: Spring/ Summer 2008**
- **Estimated Completion Date: August 2008**
- **Funding by Salisbury Township School District: \$420,000**
- **Funding to be provided by the Community: \$580,000**

THE NEED



SALISBURY STADIUM SPORTS FIELD TODAY

(Google Earth Aerial Image)



WHY SYNTHETIC TURF?



Due to the high demands of a typical high school sports schedule the current natural turf sports field is failing.

Over-compacted and poorly draining soils no longer support healthy grass growth. At the slightest rain the field becomes a quagmire. A good natural turf field can typically only handle 50 events per year. In 2006 there were nearly 70 games played at the Stadium with severe restrictions placed on use for practices and gym classes. Today's synthetic turf systems can drain 20" of rain an hour, have proved comparable to natural turf in safety testing, require less maintenance and can be used over and over again – game after game after game, even in the rain!



THE CAMPAIGN



- Led by **The Salisbury Community Synthetic Turf 2008 Committee** which is made up of a dedicated group of volunteers including parents, coaches, educators, and community leaders
- Working under the auspices of the **Salisbury Education Foundation, a *not-for-profit 501c3 organization***
 - Seeking participation and support of local residents, friends, Salisbury High School alumni, families and volunteers
 - Local businesses, institutions, private foundations and civic organizations
- Campaign offers everyone an exciting opportunity to invest in our community and to create a first class playing field and facility at **Salisbury High School Stadium**

THE GIVING TREE



**NAMING RIGHTS AND
LOGO RECOGNITION OPTIONS
ARE AVAILABLE**

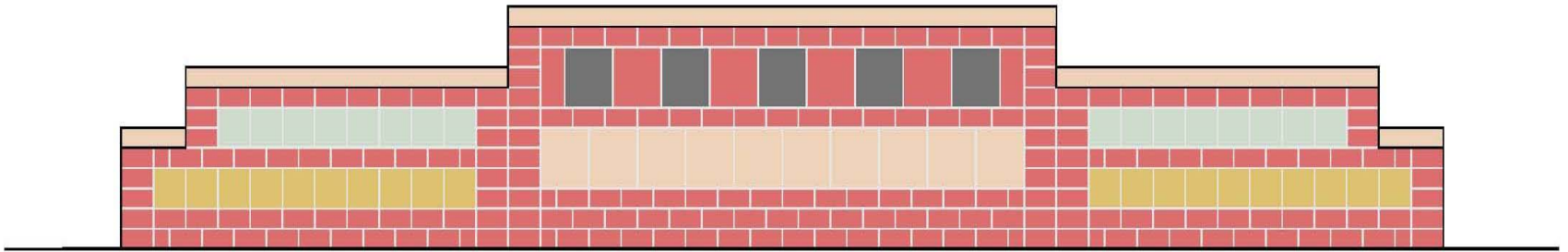
THE GIVING TREE



Friends of The Falcons Sign Campaign

***Scoreboard Advertising and Stadium Signage
is available from \$5,000 and up.***

THE DONOR WALL



Falcon Donor Recognition Wall

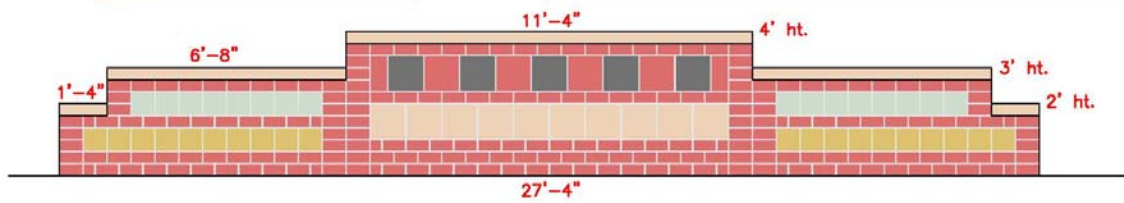
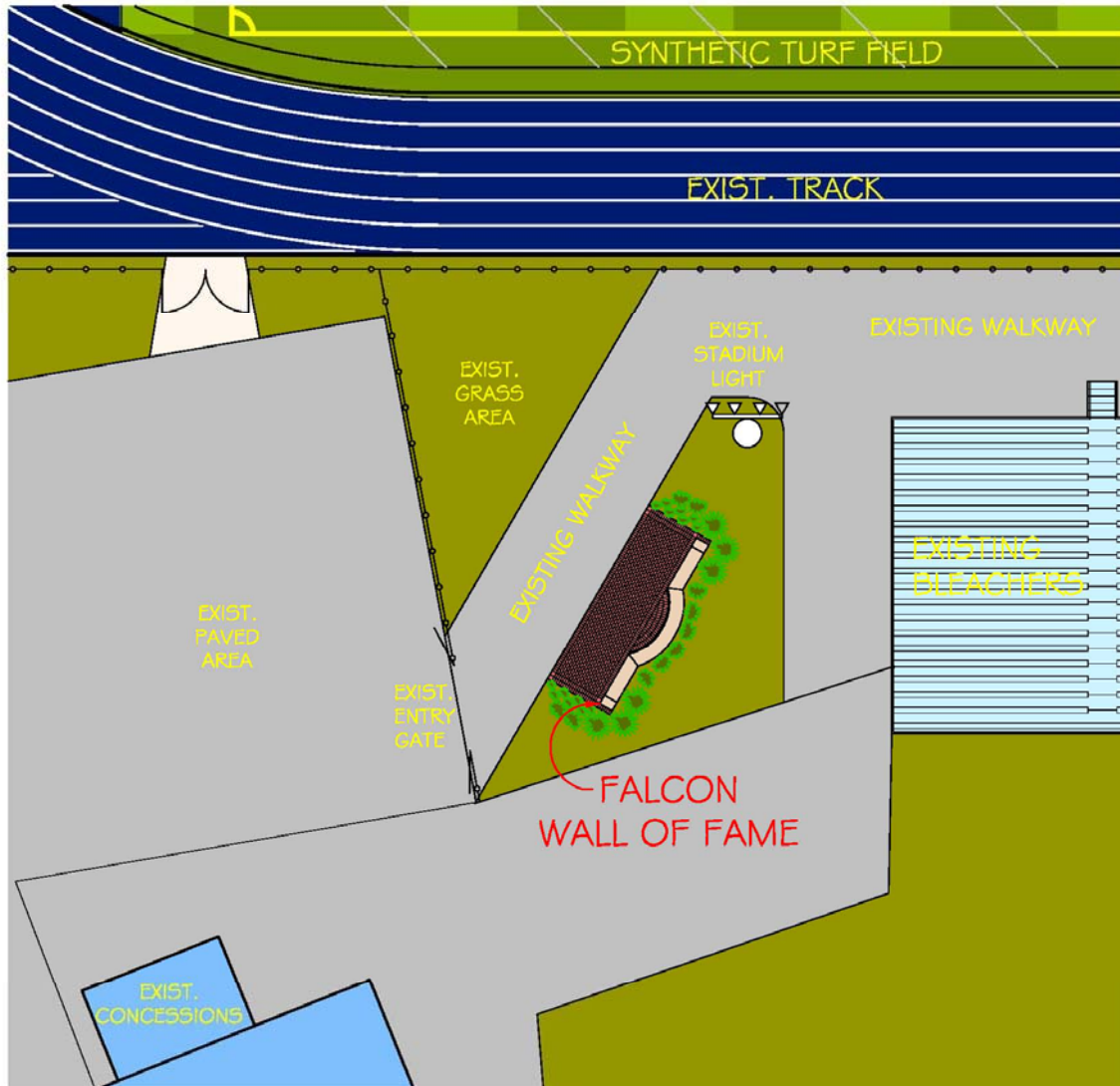
Platinum Level Donors: \$10,000 Donor

Gold Level Donors: \$5,000 Donor

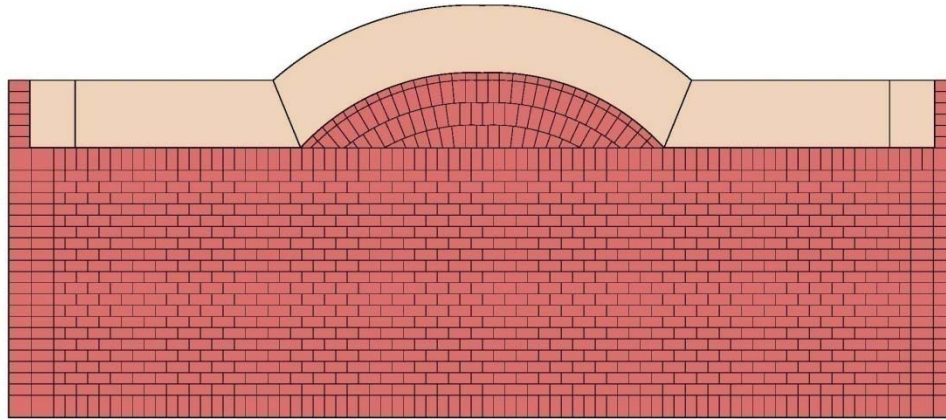
Silver Level Donors: \$2,500 Donor

Bronze Level Donors: \$1,000 Donor

**Purchase a recognition panel on our
Donor Wall with donations of \$1,000 - \$10,000**



THE DONOR WALK



Falcon Donor Walk  Buy-a-Brick
Campaign

**Purchase an engraved paver brick with
donations of \$125 (4x8) and \$250 (8x8)**

A PIECE OF THE STADIUM TURF



**Receive a Souvenir Turf Box with a
Donation of \$125**

THE BENEFITS



With the installation of synthetic turf at Salisbury High School Stadium there will be flexibility to schedule events without worrying about damaging the field. Salisbury sports teams will enjoy playing on an even and consistent surface. The football team, the band, the boys and girls soccer teams, and now the field hockey team will be able to play on this pristine field. Team practices and gym classes on the stadium field will become a reality again. Even the baseball and softball teams will have a place to practice while other fields are still unplayable in early spring. And a significant side benefit – this will become a community field as community youth organizations will be invited to utilize this venue.

**Salisbury High School Stadium
will truly become a community
“Field of Dreams”**



Photos Courtesy of NLS Photo

HELP PUT THE FALCONS ONTO A FIELD WORTHY OF CHAMPIONS!



Please help us reach our goal!

